



Micro Mark

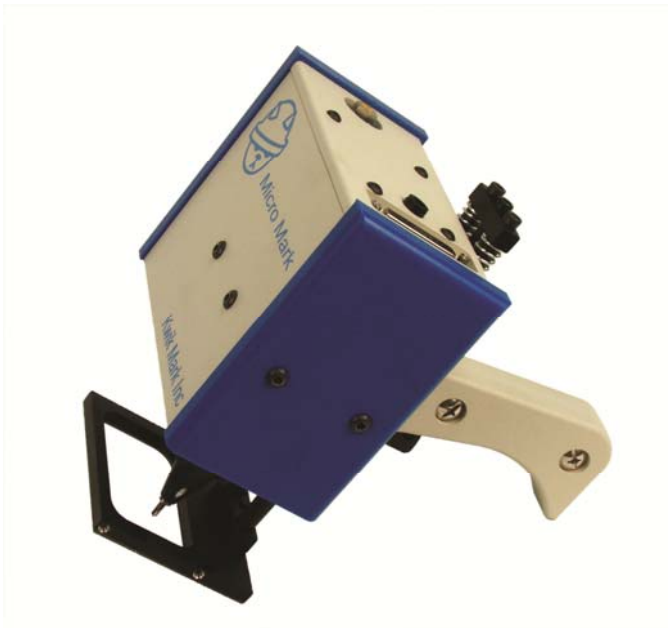
Portable DOT PEEN Marker



Small - Fast - Simple - Flexible - Affordable

By: Kwik Mark Inc

A Smart Solution



Multi Function Use

The Micro Mark is the most versatile compact dot peen marker available today. Ideal for hand held applications as well as on-machine integration.

Small Footprint Large Mark Area

The compact (3" x 5" x 6") head size (5+ lbs) offers a generous 1.0" x 2.5" marking field to suit most industrial marking applications.

Designed For Easy Integration

Lots of additional I/O (with logic) streamlines "handshaking" with other machinery, when required, and allows importing data from external files.

Includes all software functions as the entire Kwikmark product line.

Machine Tool Quality

The system is designed & manufactured with:

- Pre-loaded drive system & ball slides
- Brushless hi-torque motors
- Non contact limit sensors
- Precision machined aircraft quality aluminum
- Industrial plated connectors
- Latest embedded control technology

A Better Design

- Elastomer (& replaceable) end caps protect sides and all edges
- Motors & homing sensors are statically mounted (no cables to flex & break)
- Standard D-Sub 25 pin connector cable (non-proprietary)
- Quad sided mounting hole pattern for mounting flexibility
- Precise X-Y rectangular motions (non pivoting)
- Detachable solid state control box
- Capable of marking up to: 62Rc hard steels

Several options are available from stock such as hardened V block feet, reversible auxiliary handles for LH or RH operators, and miscellaneous mounting / clamp designs for standard and custom applications.

Super Speed Performance!



Easier To Use



Automatic Line Centering

This feature will automatically center the marking image to your part, whether it is single or multiple lines, graphics or both with no measuring or operator input required. Just type the information you wish to mark and the Micro Mark will line it up automatically! This feature may be enabled in the X, Y or both axes.

Your operators will appreciate this feature especially when marking round parts such as shafts, pipes, etc.

Ergonomic Design

We listened. We designed the handle with the “just right contours” and machined it from solid light weight aluminum.

The handle is also part of an assembly that incorporates a quick release mount as well as a central micro-adjustment mechanism used to fine tune the distance from the tip to the marking surface.

Then we designed a unique mechanically actuated trigger that requires no wires or connections to the marking head.



Balanced for LH & RH Operators



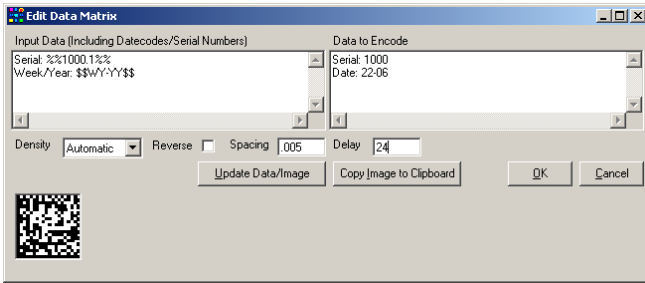
The Operator's Choice

Just squeeze the trigger or touch the button. Your operators will appreciate the ergonomics and ease of use with the marker's stability.

The Micro Mark's light weight centered and balanced handle suits both left & right handed operators.

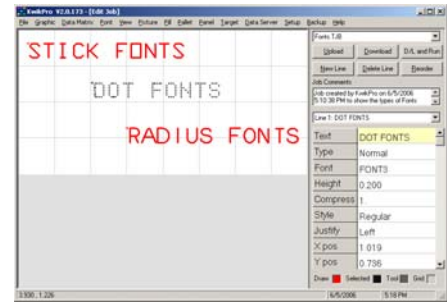


Pre-Programmed Functions



It Can't Be Any Simpler

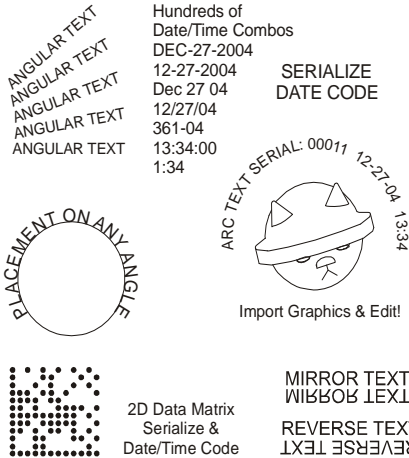
Dozens of setup screens, such as this 2-D matrix are pre-programmed functions allowing the user to "fill in the blanks". It really is that simple.



Font Types for All Marking

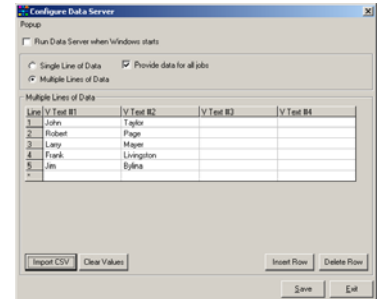
A selection of fonts is included to satisfy any marking requirement. Stick, 5x7 dot, 6x9 dot, radius, etc.

Combine Line Styles & Types



Mix and combine lines with logos, serial numbers, and date, time & shift code functions in an unlimited combination of line types and styles font heights etc.

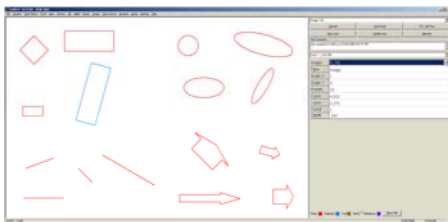
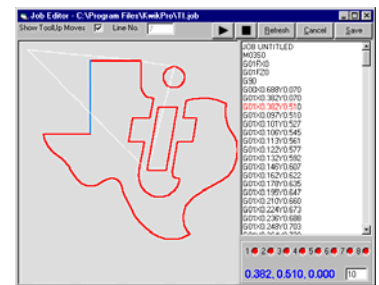
Import data from external files. Dozens of pre-programmed functions are included.



Pre-Drawn Images

Basic images of arrows, circles, boxes, etc are provided and can be:

- Stretched
- Rotated
- Moved
- Scaled
- Modified

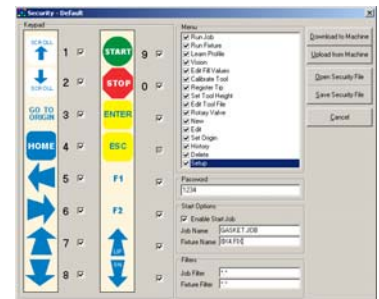


Date	Time	Job	Count	Run Time
01/13/04	00:17	THIS	#0004	00:06
01/13/04	00:15	0	#0005	00:10
01/13/04	00:14	THIS	#0001	00:10
01/07/04	22:54	TEXTJOB	#0001	00:16
01/07/04	22:54	LINVATEC	#0001	00:19
01/06/04	23:34	THIS	#0148	00:17
01/06/04	20:48	0	#0335	00:11
01/06/04	19:47	LIN	#0002	00:04
01/06/04	19:46	KEYBOARD	#0031	00:26
01/06/04	19:27	TEXTJOB	#0002	00:05
01/06/04	19:26	KEYBOARD	#0001	01:03
01/06/04	18:51	LIN	#0000	00:00
01/06/04	18:50	KEYBOARD	#0003	00:36
01/06/04	18:48	KC	#0001	00:05
01/06/04	18:47	010504-1	#0014	00:00
01/06/04	01:14	KEYBOARD	#0001	00:37

Production Logging & Security Protection

Traceability information is stored after (& during) each cycle. This includes the time/date serial number values. The History file may be accessed from the Windows Suite and then printed, copied into a report or saved.

Security (password protected) may be setup to any level.



Easy to Learn & Use



Now with Ethernet Connectivity

Latest Embedded Control Technology

The controller features a dual memory processor and CF memory card capable of storing hundreds of jobs. The system also includes CNC type instructions and complete file management. A detachable keyboard is included for job setups. RS-232, Ethernet (LAN) connectivity along with dual USB ports for bar code scanners, aux devices, etc.



Traditional:

Setup job on the controller. User will be prompted step by step, for a name, marking info, etc, and the job will be saved to internal CF memory card.

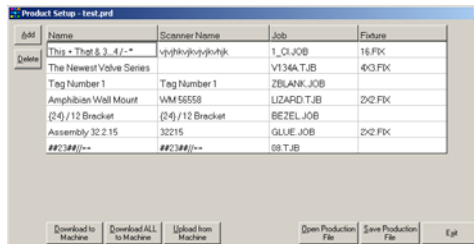
Express Text:

Just press F1 and type. When the trigger is pressed, the marker marks what you typed! Simple. It's the next step from a hammer/punch or scribing pen.

Because sometimes there's no reason to save the job.

MODE OF OPERATION
 ← DUAL →

Network Connectivity



Print To External Label Printers

Mark Data From External Files

All systems (and software) are designed & manufactured in our clean, state of the art facility on modern CNC equipment to the industry's most stringent quality control.

Over 25,000 sq ft is dedicated to research / development & high tech assembly. The controls and mechanics feature time proven designs with thousands of systems in the field.