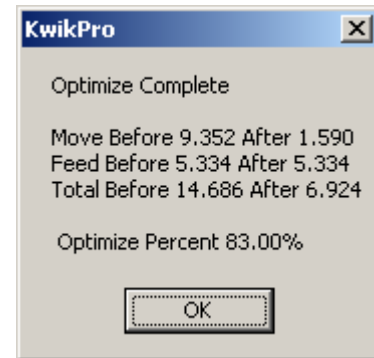
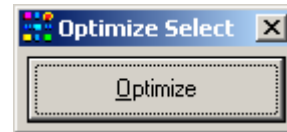
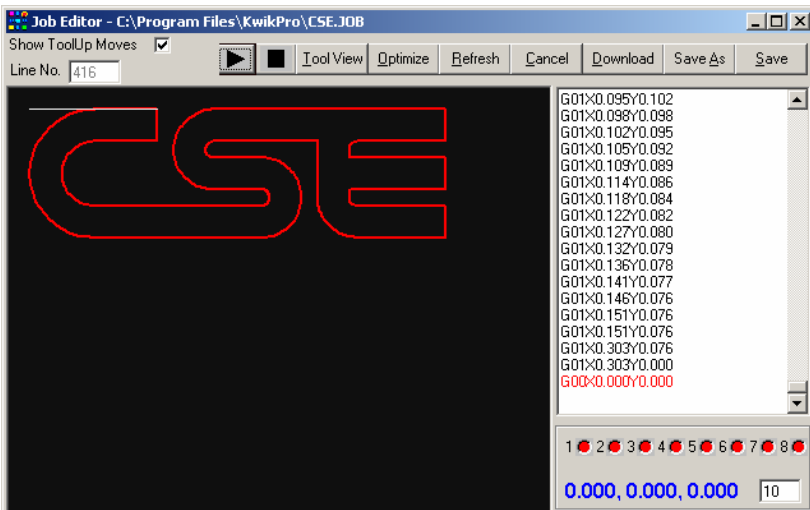
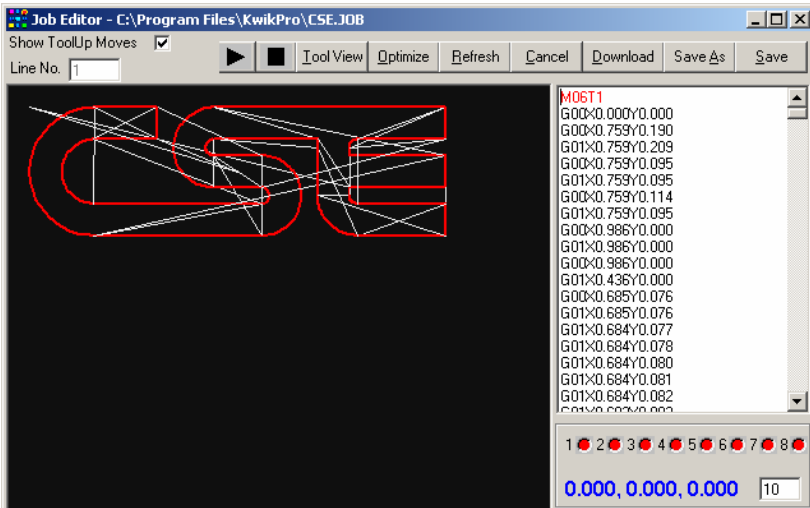


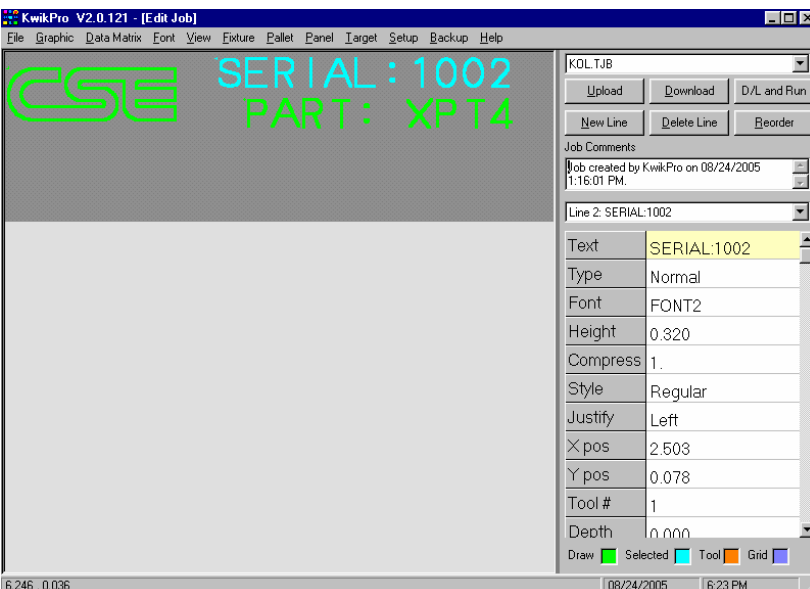
# Powerful Optimizing Function for Importing Graphic Files

Imported files have random (point to point) motions and require optimization. This removes the excessive start/stop points resulting in improved quality and faster cycle times.

All imported files (DXF or PLT) are automatically converted to G Code.



The optimized file now starts and stops at one point creating a smooth continuous path contour. Notice the optimization was 83%.



The image(s) is treated as a "line" and may then be added to the actual marking file. The image(s) may also be stretched, compressed, moved, edited, etc just like any other alphanumeric line.

There is no limit to the number of graphics or alphanumeric lines in a file.