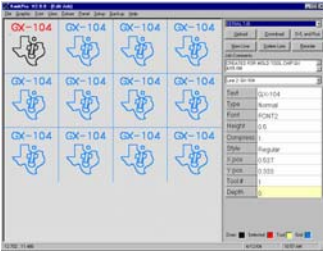


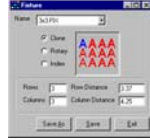


# Kwikmark Windows Software Suite

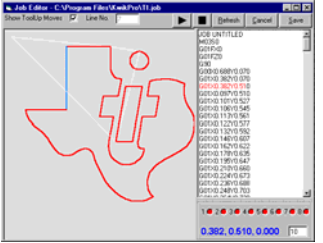
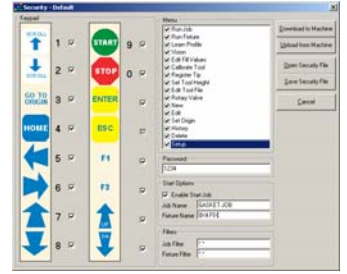
## Features & Highlights



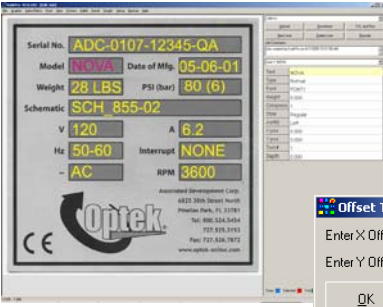
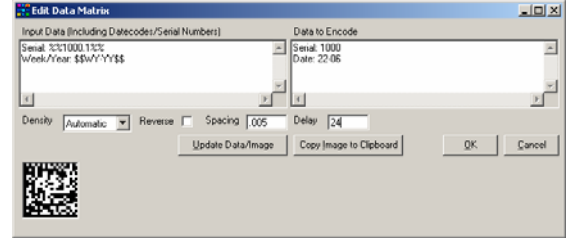
**Dozens of Enhanced Functions**  
Cloning is one of the many time saving and machine streamlining features that are included.



**Security Files**  
Lockout any keys and/or menu functions.  
Password protected.

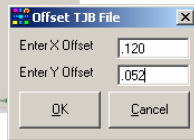


**View Edit and Simulate**  
You may create a logo directly in the software or just import from HPGL, .DXF .PLT or G-Code files.



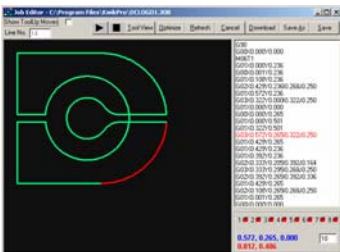
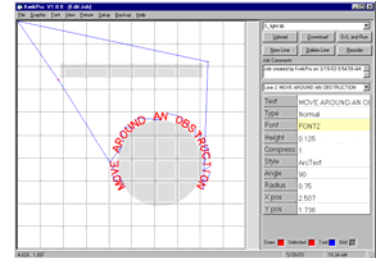
**Visual Tag Layout Screen**  
Import images of your tags directly into software and use them for a template. With *TEACH* or *TYPE* positioning.

**2-D Bar Code Marking**  
Latest version of Data Matrix supports variable data such as date/time coding and multiple level serializing. 31 codes and automatic size mode.



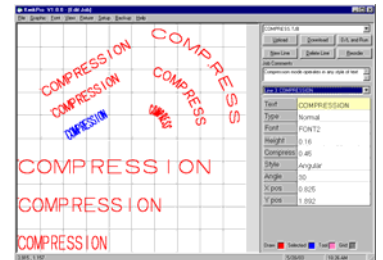
**Universal Offset**  
Provides a convenient global X and Y axis offset that will move all of the lines in a file.

**Move Commands**  
Add "move" lines with the click of a mouse, to miss obstructions.



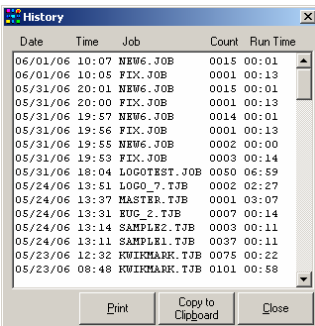
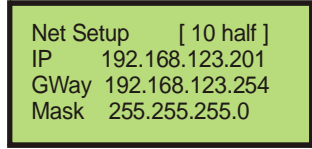
**Fully Exploded Graphics**  
All imported files allow editing, scaling, rotating, stretching etc, directly in our software.

**Compression Tools**  
Easily fit text within a desired area regardless of shape.



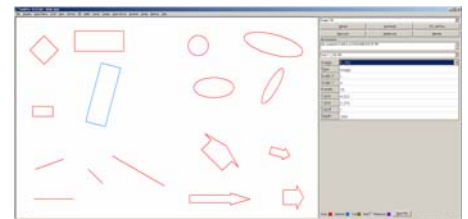
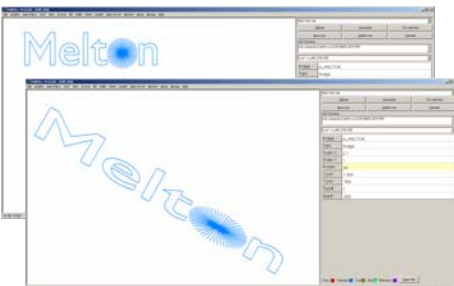
**Detailed History Function**  
A convenient history function displays detailed production information at the touch of a button.

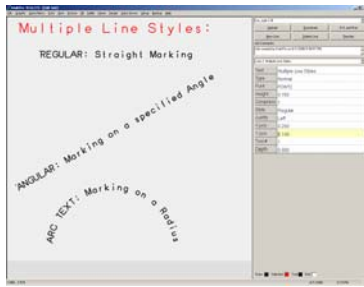
**Ethernet Connectivity**  
Just setup the IP address on the machine and connect to your network.



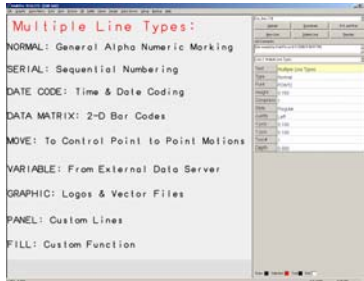
**Image Lines**  
Upon import, all graphics are "exploded" so you may edit, rotate, stretch, scale, move, etc directly in our software.

**Pre-Drawn Images**  
Basic images of arrow, box, circle, etc are provided. Each may be stretched, rotated, scaled, etc, for your marking application.

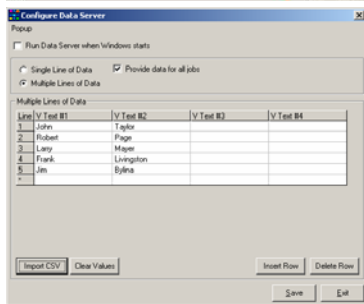




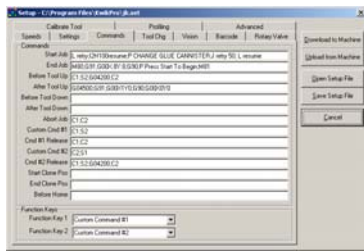
**Multiple Line Styles**  
Each line may be marked in straight, angular, or arc text mode. Each line has its own list of properties such as font height, justification, etc.



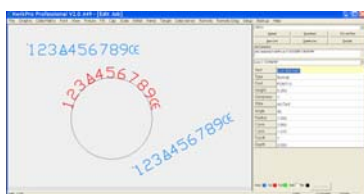
**Multiple Line Types**  
Mix and match different text lines, graphics and codes without limitation. Accepts variable data from Windows server, bar code scanner, external files, instruments etc.



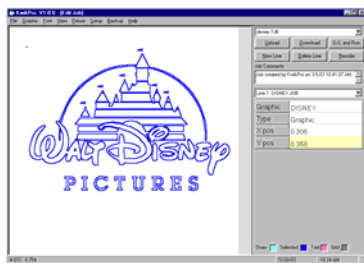
**Windows Server**  
Control your system(s) from a remote PC and send external variable data from data bases & spreadsheets.



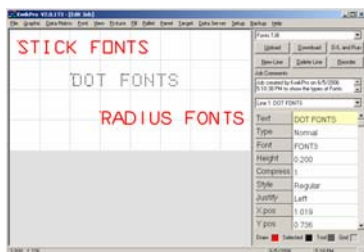
**Commands and Functions**  
Any of the supported commands and G Codes may be input at different parts of the machine cycle.



**Custom Fonts & Logos**  
Custom Fonts allow marking logos (graphics) as embedded fonts to automatically follow the text line(s)

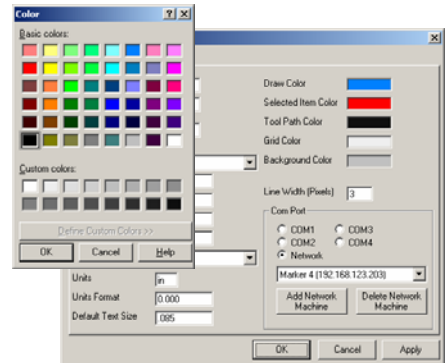


**Graphics Flexibility**  
Graphics become "files" that may be downloaded (similar to a font file).

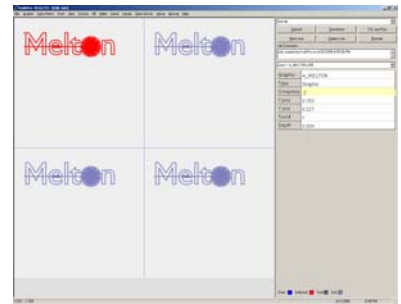


**Font Types for all Marking**  
A selection of fonts is included to satisfy any marking requirement. Stick, 5x7 dot, 6x9 dot, radius, etc.

**Convenient Preferences**  
Easily set the work environment to best suit your preferences and marking applications.

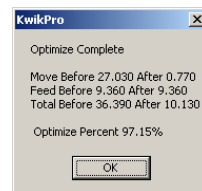
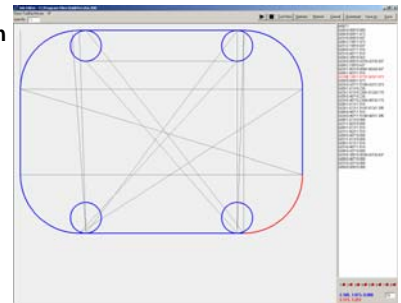


**Fixture Mode Display**  
Conveniently display the fixture file with the marking file to proportionally show the image as it will be marked on your parts.

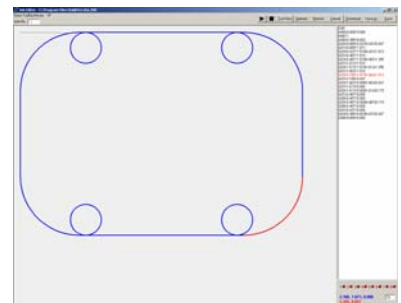


**Powerful Optimization**

**BEFORE**  
A Raw DXF logo file exported from AutoCAD.

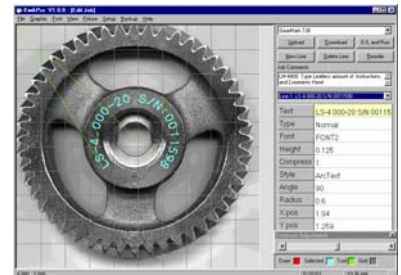


**AFTER**  
The marking process is streamlined (over 97% optimization) with minimal moves.

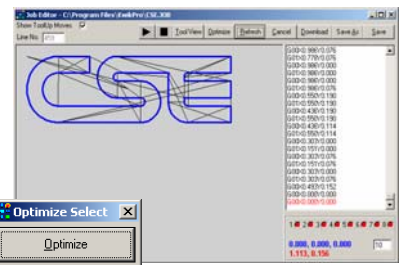


**Scan to Layout Feature**

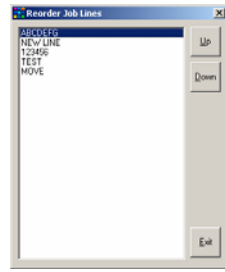
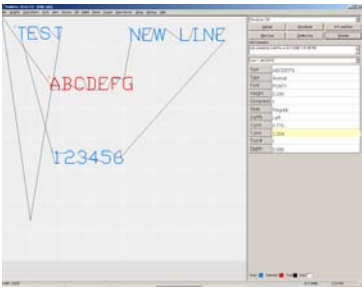
Machine parts, tags, etc. may be scanned and their images imported into the software.



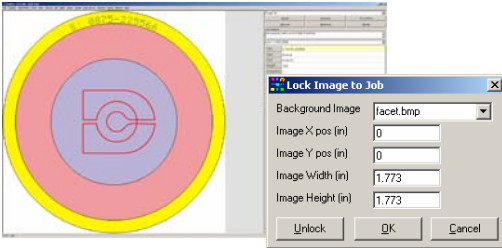
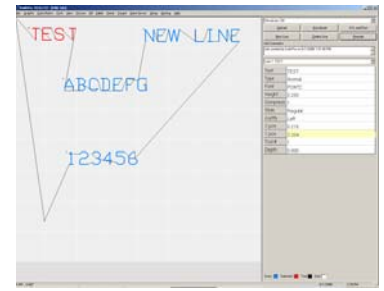
**Selectable Start Point**  
Automatic nearest end point, or user selectable start point for any optimized image.





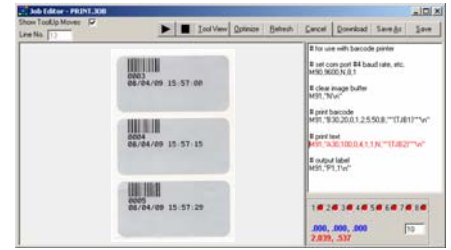


**Re-Ordering Lines**  
Any of the lines may be re-ordered on the screen to control the machine path. Forward / backward marking automatic.



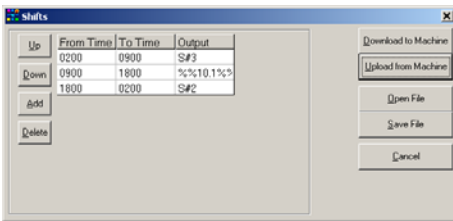
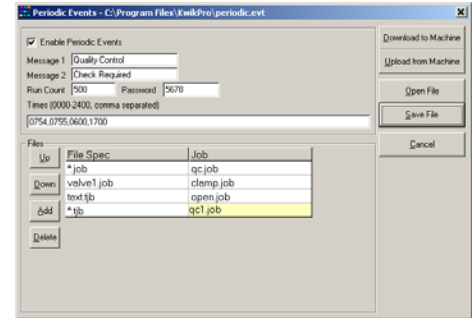
**Image to File Locking**  
Automatically sets the correct background image & sizing to the selected marking file.

**Print Data to External Label Printer**  
Capable of printing the alpha-numeric data to an external label printer automatically, while marking your part.



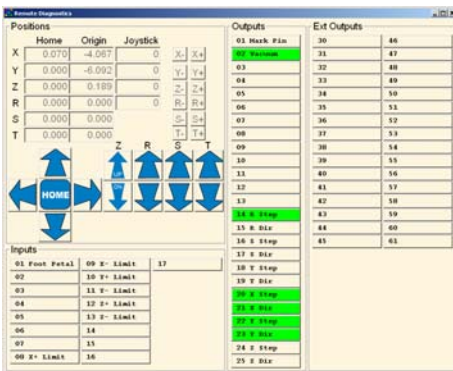
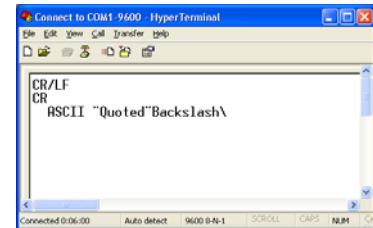
**Production Files**  
Allow setting up combinations of files & fixtures using any characters / symbols for file names and bar code scan names

**Periodic Events**  
Setup functions or QC logic by time period or run count.



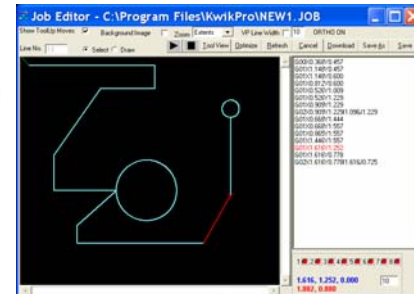
**Shift Coding**  
Define shift codes to be marked by time of day. Supports all programmed functions.

**Communicate to External Devices**  
Convenient data port allows communicating to external devices with ASCII commands.



**Remote Diagnostics**  
Read input status, force outputs, and jog machine control for streamlining setup of machines with additional features, custom tooling.

**Drawing Tools**  
Simple CAD type drawing tools allow user to create logos, diagrams, etc. Use keyboard or teach with the machine.



**Dual Mode Bar Code Scanning**  
Just plug in a bar code scanner to use for job selection or to populate scanned data into the marking file.

**Remote Screen**  
Operate system as a printer directly from the Windows screen and view machine status (parts count, cycle time, etc), from any remote location.

**Kwikmark Markers and KwikPro Software**

designed & manufactured by:

**Kwik Mark Inc**

4071 Albany Street

McHenry Illinois 60050 USA

Ph: 815 363 8268 Fx: 815 363 8089

[www.kwikmark.com](http://www.kwikmark.com)

R0912