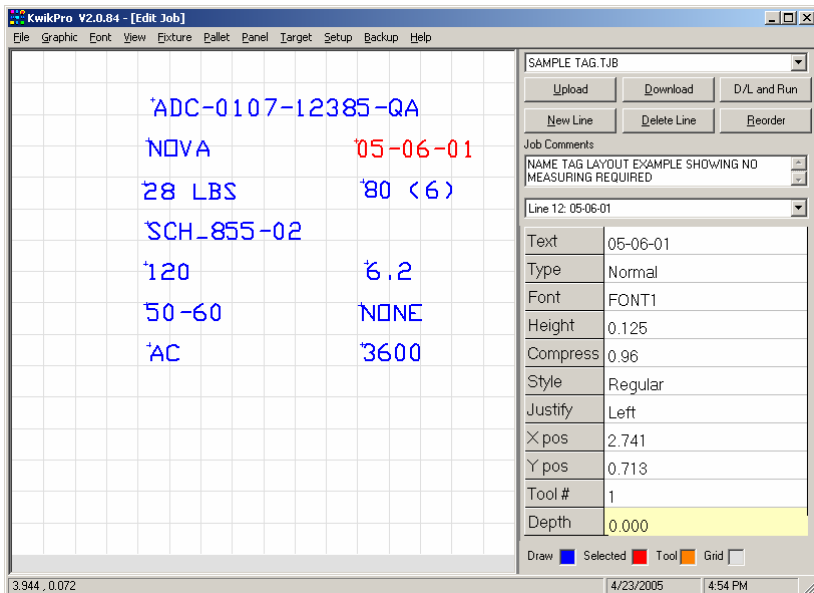
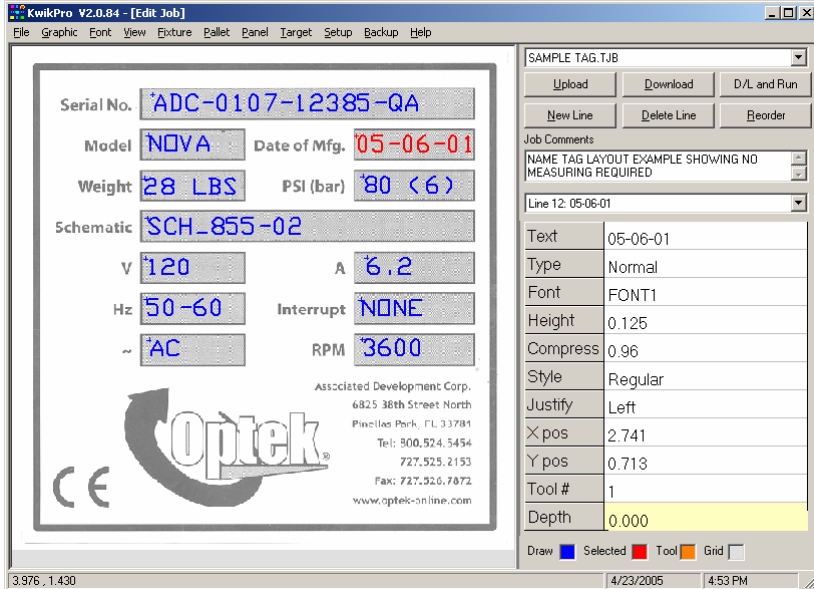




Windows Software Suite Scan to Layout



Scan to Layout

Import an image from your scanner or file.
This may be any of the following files:

- .BMP bitmap
- .JPG jpeg
- .WMF metafile
- .ICO icon
- .EMF enhanced metafile
- .RLE run length encoded
- .GIF graphical interchange

Use it as a template to line up the text lines right over the image and eliminate time consuming measuring and fussy layout work.

Dozens of tools are provided for setting up and fine tuning positioning and text size.

Just click on any line & the associated properties for it are displayed for quick editing.

The Function keys may be used to increment any numerical values as follows:

- F1 = 10.000
- F2 = 1.000
- F3 = 0.100
- F4 = 0.010
- F5 = 0.001

The dynamic screen will redraw the selected line with each keystroke. This means quickly tapping a Fn key will appear to move the line, grow the text, change the Arc text radius, etc. in real time.