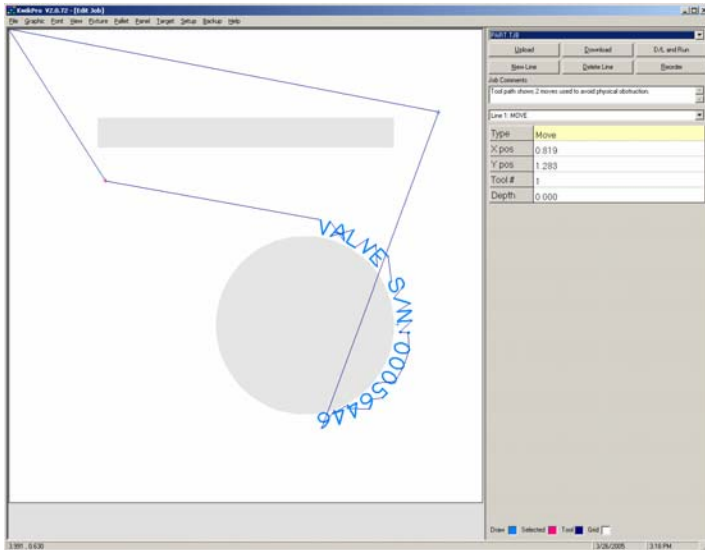
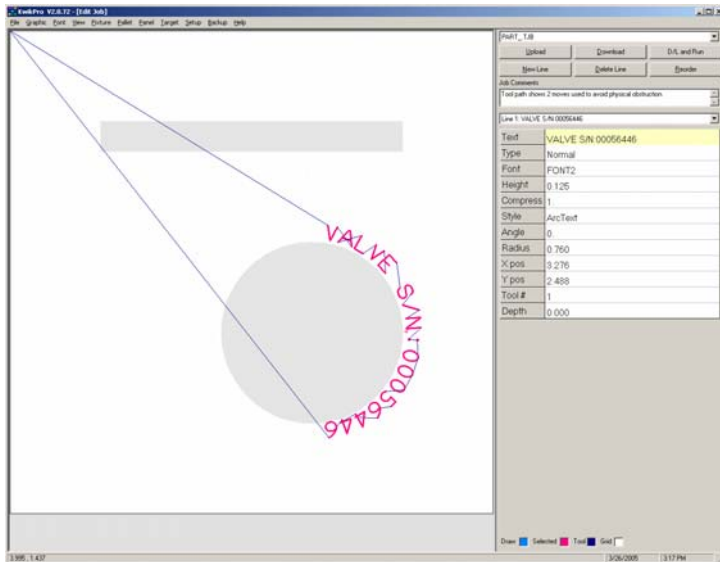




Windows Software Suite Move Lines



Move Lines

If a part has a physical obstruction that will interfere with the pin as it travels to the marking area a **Move** line type may be added to the screen.

This is another type of line that is used to direct and control the travel of the marking pin to avoid any obstructions in its tool path.

The **Move** line has limited properties (X Pos & Y Pos) that may be entered via the keyboard or it may be positioned by clicking the mouse.

Several **Move** lines may be used per file as needed to control the path around objects.

The examples to the left show a scanned image of the part being used as a template to position the move lines. The top screen shows a crash condition prior to setting the two **Move** lines.