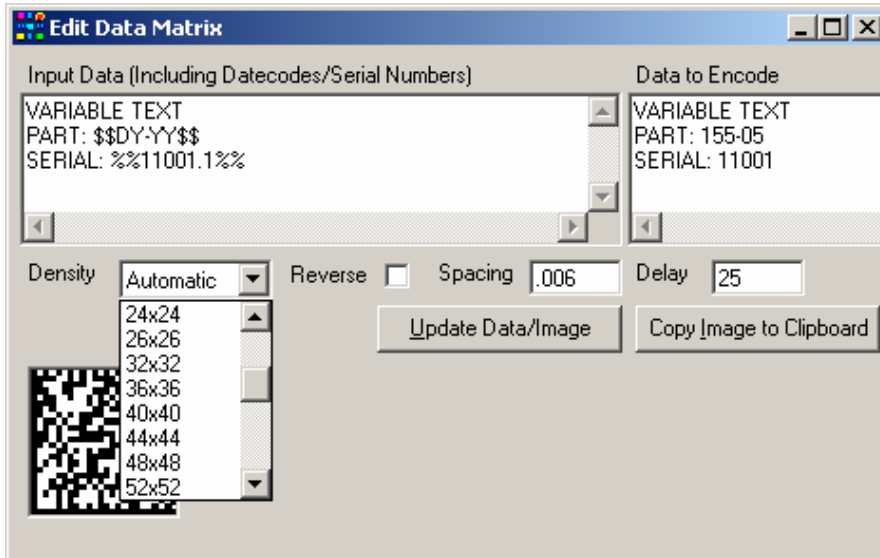




Windows Software Suite Data Matrix



2D Coding Capability

Using the Data Matrix function, 2D codes may be permanently marked onto the material surface for machine readable product tracking.

This is the latest ECC200 spec which includes sequential numbering, date and time coding, along with the ability to retain information even when partially damaged, via redundant imagery.

Over 30 sizes and configurations are included, including Automatic mode that will size the image to best fit.

The 2D code(s) is a line type and may be placed in the same file as graphic and alpha numeric lines. Spacing controls the distance between cells to allow marking codes even on subminiature areas.