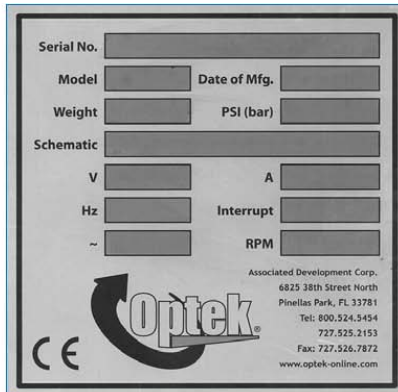




Marking tags, labels, nameplates, etc. Is as Easy as 1... 2... 3...

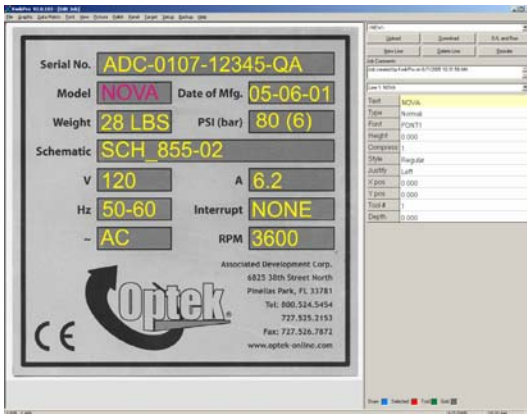


1 Import scanned image of your tag into the software

Software accepts dozens of import formats such as BMP, TIF, JPG, etc. The software knows to lock out the scanned image and only mark the text that will be applied over the image.

2 Type the information over the desired area(s)

No need to measure the tag or text positions! Just type the desired information over the area you wish to mark. You may stretch, drag, rotate and fine tune the position by either using your mouse to drag or enter numerical X/Y coordinates of the location and size of the text. The scanned image of your part will remain with the file when it is saved.



3 Completed tag required no measuring or layout work

Using your part for a true to scale template results in perfect layouts every time! This feature will streamline your production whether marking individual tags or when using the Kwikmark Tag Master Automated Magazine Feeder. Supports Serial Numbering, Date/Time coding, Graphics, etc.

