



Kwik Mark

Industrial DOT PEEN Marker



Today's Most Popular & Affordable Marker

By: Kwik Mark Inc

A Smarter Marking Solution



The Kwik Mark Marker Model KM-64

The Most Ergonomic Design !

Machine Tool Quality

The system is designed & manufactured with:

- Pre-loaded drive system
- Brushless hi-torque motors
- Non contact limit sensors
- LCD display & touchpad
- Embedded controls
- Digital solid state electronics



Latest Embedded Control Technology

The Kwik Mark features an embedded dual memory processor and Compact Flash memory card for fast real time performance. The system also includes CNC type instructions and complete file management. A detachable PS-2 keyboard is included for job setups and a bar code scanner input exists as well.

One of many advantages of a file based solution is the ability to upgrade the machine's software. Furthermore there are no limits to number of lines in a file, numerical values, file size, etc.

The Operator's Choice

We've made the fastest, most feature rich system also the easiest one to use, with the "just right" combination of controls. Includes batch counters, status displays, positions, etc.

And because we make the entire systems, we ensure the lowest pricing possible. And you can't afford anything less.

Multi Function Design

The Kwik Mark is a bench top marking system used to mark materials ranging from hardened tool steels to delicate plastics and even glass.

Small Footprint Large Mark Area

The self contained unit requires no PC for operation and offers a generous 6" X 4" marking area to suit most industrial marking applications.

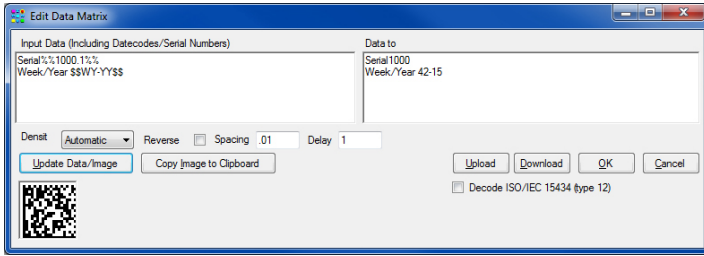
Designed For Easy Integration

Additional I/O (with logic) and RS-232 & network (LAN) connectivity streamlines "handshaking" with other machinery, when required, and allows importing data from external files or instruments.

**Network
Connectivity**

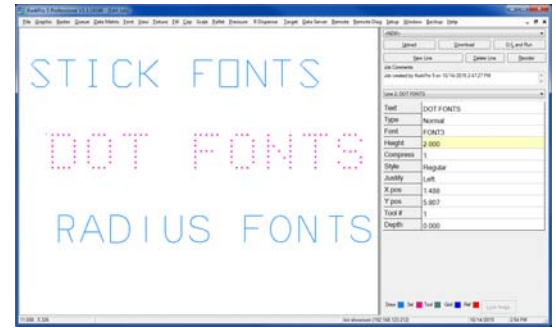


Pre-Programmed Functions



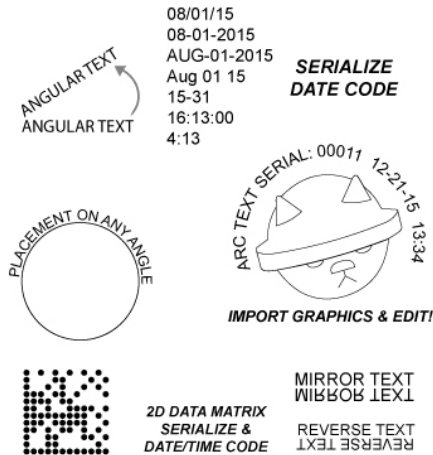
It Can't Be Any Simpler

Dozens of setup screens feature pre-programmed functions allowing the user to "fill in the blanks". It really is that simple.



Font Types for All Marking

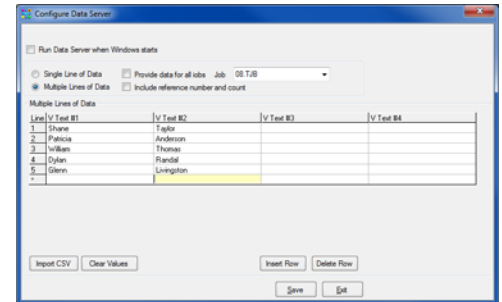
A selection of fonts is included to satisfy any marking requirement. Stick, 5x7 dot, 6x9 dot, radius, etc.



Combine Line Styles & Types

Mix and combine lines with logos, serializing, and date, time & shift code functions in an unlimited combination of line types, font heights etc.

Import data from external files.

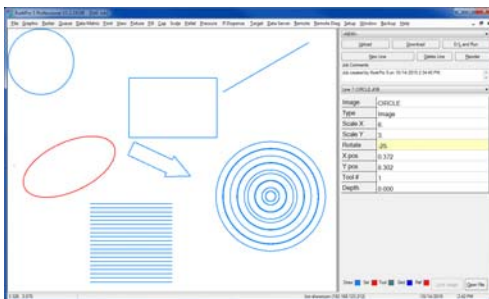
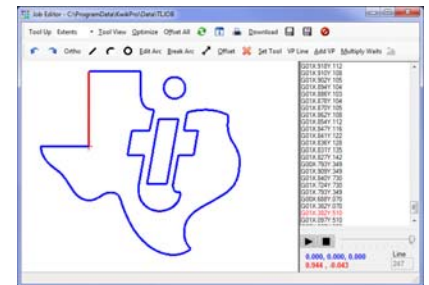


Pre-Drawn Images

Basic images of arrows, circles, boxes, etc are provided and can be:

- Stretched
- Rotated
- Moved
- Scaled
- Modified

To suit your application.

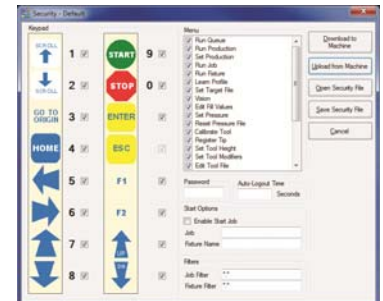


Date	Time	Job	Count	Run Time
09/02/15	15:08	MAR-2.TJB	0001	00:19
09/02/15	15:00	MAR-1.TJB	0003	00:38
09/02/15	14:40	MAR.TJB	0000	00:00
08/24/15	13:55	H-TEST.TJB	0004	00:23
08/19/15	09:58	ARG.TJB	0003	00:17
08/19/15	09:52	EXPRESS.TJB	0007	00:09
08/10/15	10:29	HNL.TJB	0003	00:06
08/10/15	10:22	EXPRESS.TJB	0013	00:05
08/07/15	11:21	AESL1.JOB	0003	01:37
08/06/15	15:29	EXPRESS.TJB	0008	01:28
07/28/15	10:23	AESSEAZ.TJB	0012	00:51
07/27/15	14:45	AESSEAL.TJB	0003	00:46
07/07/15	13:56	MASSBAY.TJB	0007	00:13
07/07/15	08:11	EXPRESS.TJB	0007	00:07
06/25/15	13:46	AIR-WAY.TJB	0005	00:16
06/25/15	10:29	EXPRESS.TJB	0003	00:22

Production Logging & Security Protection

Traceability information is stored after (& during) each cycle. This includes the time/date serial number values. The History file may be accessed from the Windows Suite and then printed, copied into a report or saved.

Security (password protected) may be setup to any level.



Easy to Learn & Use



You will be marking any materials with images that rival, and in many ways, outperform laser engraving with finer more controlled depth and crisp, stunning, aesthetic qualities.

MODE OF OPERATION
← DUAL →

Traditional:

Setup job on the controller. User will be prompted step by step, for a name, marking info, etc, and job will be saved to internal CF memory card.

Express Text:

Just press F1 and type. When the button is pressed, the machine marks what you typed! Simple. It's the next step from a hammer / punch or scribing pen.

Because sometimes there's no reason to save the job.



Use a scanner for data input and / or job selection



The Kwik Mark is also available in a standard larger 12" x 7" marking area. Other sizes include 24" x 24" and even up to 4ft x 8ft travels for full sheet processing.

All systems (and software) are designed & manufactured in our clean, state of the art facility on modern CNC equipment to the industry's most stringent quality control. Over 25,000 sq ft is dedicated to research / development & high tech assembly.