



Mini Mark

Portable DOT PEEN Marker



Portable - Fast - Simple - Flexible - Affordable

By: Kwik Mark Inc

A Smart Solution



Machine Tool Quality

The system is designed & manufactured with:

- Pre-loaded leadscrews & ball slides
- Brushless hi-torque motors
- Non contact limit sensors
- Aircraft quality aluminum
- Industrial plated connectors
- Digital solid state electronics

A True File Based Solution

The obvious advantages of a file based system:
"Your machine will be better tomorrow than it is today"
The ability to upgrade the machine's software by downloading a single file, ensures that your investment will be as prudent as it is productive.

Furthermore... No limit to number of lines in a file or file size.

The Operator's Choice

Just touch the center button. Your operators will appreciate the ergonomics and ease of use with the machine's stability, light weight (6 lbs), and it's centered & balanced, dual handle design, ideal for LH & RH operators.

Multi Function Design

The Mini Mark is a compact dot peen marker ideal for machine integration and also for use as a hand held portable marker.

Small Footprint Large Mark Area

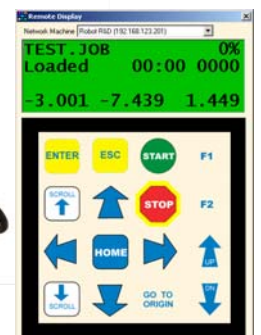
The compact (4" x 5" x 7") head size range offers a generous 2.0" x 2.5" marking field to suit most industrial marking applications.

Designed For Easy Integration

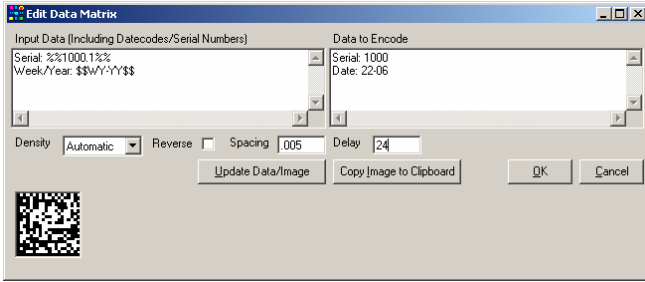
Additional I/O (with logic) and RS-232 & LAN connectivity streamlines "handshaking" with other machinery, when required, and allows importing data from external files. 12 Tapped holes provide maximum mounting flexibility for integration.

The Most Ergonomic Design !

**Network
Connectivity**

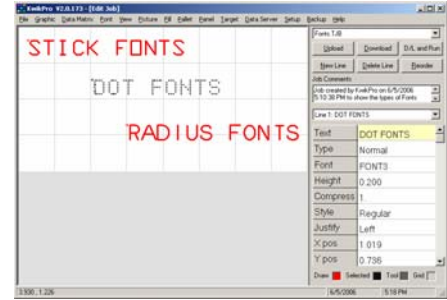


Pre-Programmed Functions



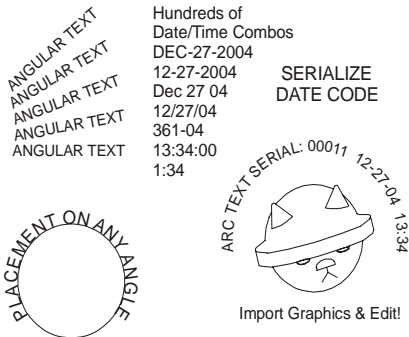
It Can't Be Any Simpler

Dozens of setup screens feature pre-programmed functions allowing the user to "fill in the blanks". It really is that simple.



Font Types for All Marking

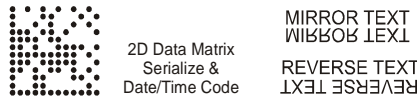
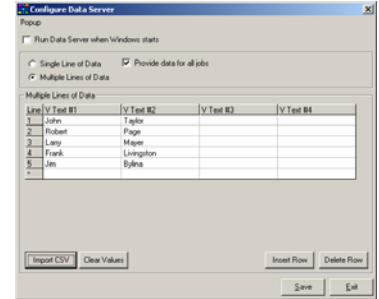
A selection of fonts is included to satisfy any marking requirement. Stick, 5x7 dot, 6x9 dot, radius, etc.



Combine Line Styles & Types

Mix and combine lines with logos, serializing, and date, time & shift code functions in an unlimited combination of line types, font heights etc.

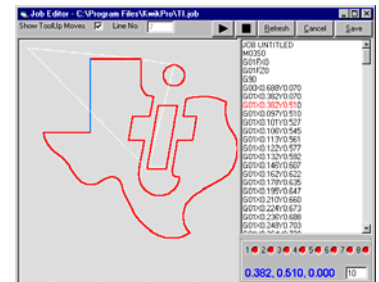
Import data from external files.



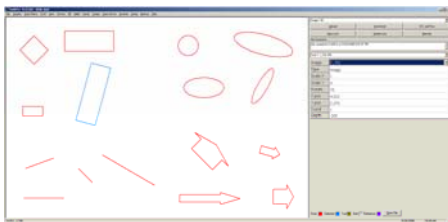
Pre-Drawn Images

Basic images of arrows, circles, boxes, etc are provided and can be:

- Stretched
- Rotated
- Moved
- Scaled
- Modified



To suit your application.

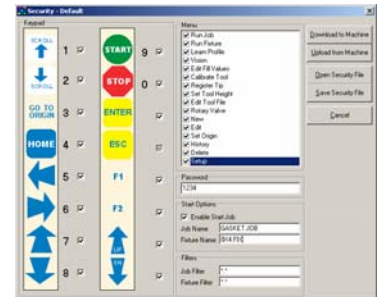


Date	Time	Job	Count	Run Time
01/13/04	00:17	THIS	#0004	00:06
01/13/04	00:15	0	#0005	00:10
01/13/04	00:14	THIS	#0001	00:10
01/07/04	22:54	TEXTJOB	#0001	00:16
01/07/04	22:54	LINVATEC	#0001	00:19
01/06/04	23:34	THIS	#0148	00:17
01/06/04	20:48	0	#0335	00:11
01/06/04	19:47	LN	#0002	00:04
01/06/04	19:46	KEYBOARD	#0031	00:26
01/06/04	19:27	TEXTJOB	#0002	00:05
01/06/04	19:26	KEYBOARD	#0001	01:03
01/06/04	18:51	LN	#0000	00:00
01/06/04	18:50	KEYBOARD	#0003	00:36
01/06/04	18:48	KC	#0001	00:05
01/06/04	18:47	010504-1	#0014	00:00
01/06/04	01:14	KEYBOARD	#0001	00:37

Production Logging & Security Protection

Traceability information is stored after (& during) each cycle. This includes the time/date serial number values. The History file may be accessed from the Windows Suite and then printed, copied into a report or saved.

Security (password protected) may be setup to any level.



Easy to Learn & Use

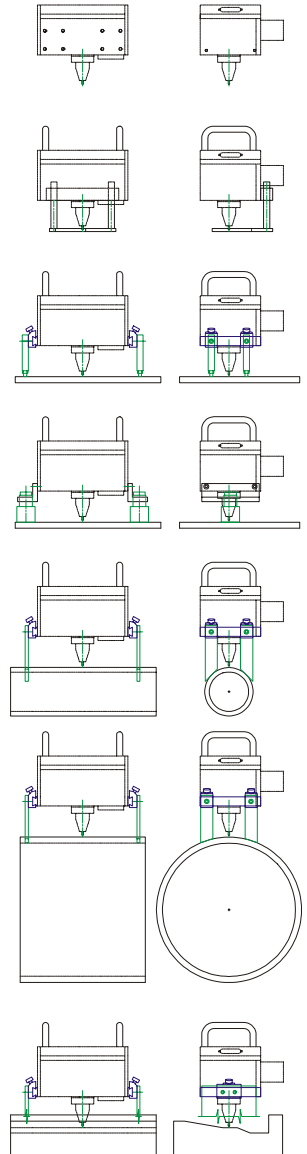


Now with Ethernet Connectivity



Latest Embedded Control Technology

The Mini Mark controller features an embedded dual memory processor and Compact Flash memory card for fast real time performance. The system also includes CNC type instructions and complete file management. A detachable PS-2 keyboard is included for job setups and a bar code scanner input is included as well.



MODE OF OPERATION
 ← DUAL →

Traditional:

Setup job on the controller. User will be prompted step by step, for a name, marking info, etc, and job will be saved to internal CF memory card.

Express Text:

Just press F1 and type. When the button is pressed, the machine marks what you typed! Simple. It's the next step from a hammer/ punch or scribing pen.

Because sometimes there's no reason to save the job.



Flexible Mounting Options

The Mini Mark shown with optional "V block" legs featuring infinite dovetail adjustment to accommodate marking round (or tapered) tubes of any diameter.

All systems (and software) are designed & manufactured in our clean, state of the art facility on modern CNC equipment to the industry's most stringent quality control.

Over 25,000 sq ft is dedicated to research / development & high tech assembly. The controls and mechanics feature time proven designs with thousands of systems in the field.