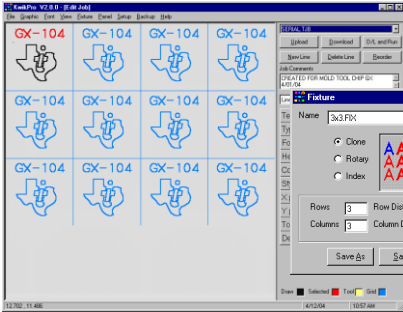


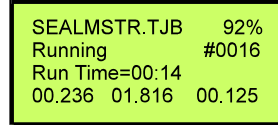
Kwikmark X-12 controls & optional software suite

Software & Control Highlights



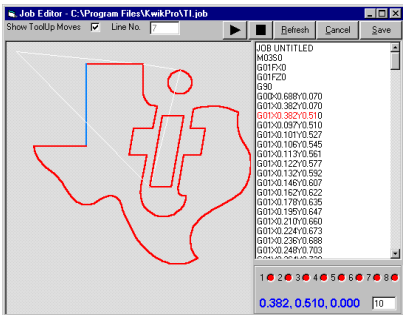
Dozens of Enhanced Functions!

Cloning is one of the many time saving and machine streamlining features that are included in the kwikpro control package.



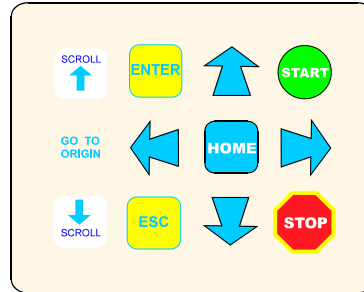
Bright LCD Display

Shows real time machine status and includes batch counter, cycle timer, % of completion



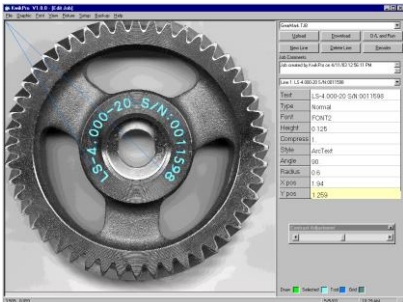
View Edit and Simulate!

In addition to the hundreds of text routines, you may create a logo directly in the software or just import from your .DXF .PLT or G-Code files.



Operator Interface

The multi key touchpad provides the intuitive operator interface along with one touch functions for easy operation.



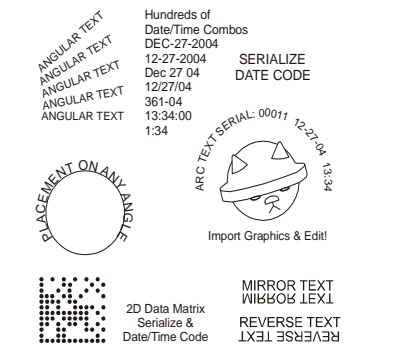
Scan Image for your Template!

Import scanned images of your parts directly into software and use them for a template. No more fussy measuring & layout work required.



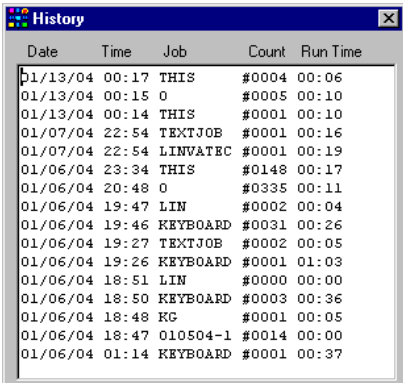
Unlimited Program Size and Storage

The on board processor requires no external PC for operation. The Compact Flash Card stores all marking files, setup parameters etc.



Combine Line Styles & Types!

Mix and combine lines with logos, serializing, and date code functions in an unlimited combination of line types, font heights etc. Graphics may be edited and scaled directly in the software. 2D Data Matrix (31 modes)



Detailed History Function!

A convenient history function displays detailed production information at the touch of a button.

kwikmark.com
815 - 363 - 8268
www.kwikmark.com



X-12 Marking Area: 12" x 6" with 12" height capacity. Available with programmable Z axis.